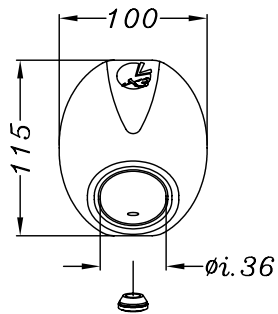
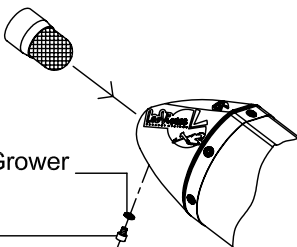


VISTA DA "A"



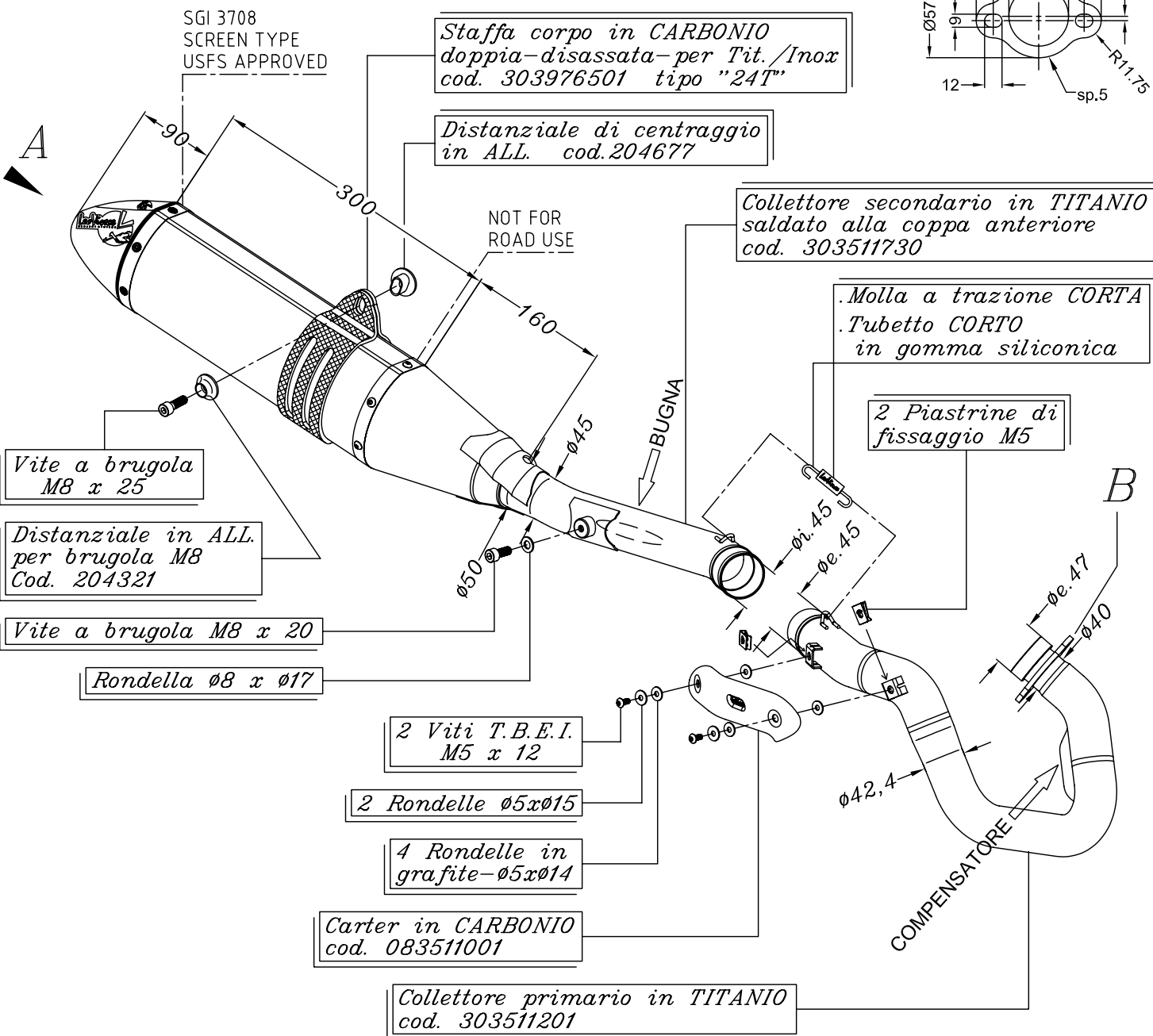
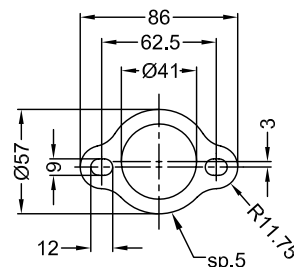
FRANGIFIAMMA
SPARK ARRESTER
Cod. 303740601
(U.S.A. market)

Rondella Grower
Ø5 x Ø9
Vite M5x6
Tappo in gomma
cod. 204790



VISTA "B"

Flangia "124A"



HONDA CRF 450 R i.e. ('09)

Art.3511

Impianto completo <<X3>> MOTOCROSS/SUPERMOTO - Full TITANIUM