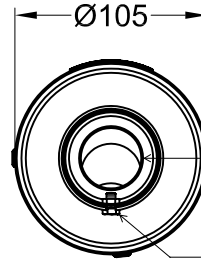


Vista da "A"



*dB-killer n.32D
Cod.308114801*

*Vite T.E. M5x8
Rondella Ø5xØ10*

*Vite a brugola
M8 x 35*

*2 Viti T.E. flangiate M6x16
Cod.204985*

*Staffa in Carbonio
Cod.307761501*

Guarnizione Cod.204980

*Vite a brugola
M8 x 20*

*2 Distanziali in Alluminio
per brugola M8
Cod.204321*

*2 Distanziali in Alluminio
Øe.25/19,5 Øi.8,5 h.8
Cod.204654*

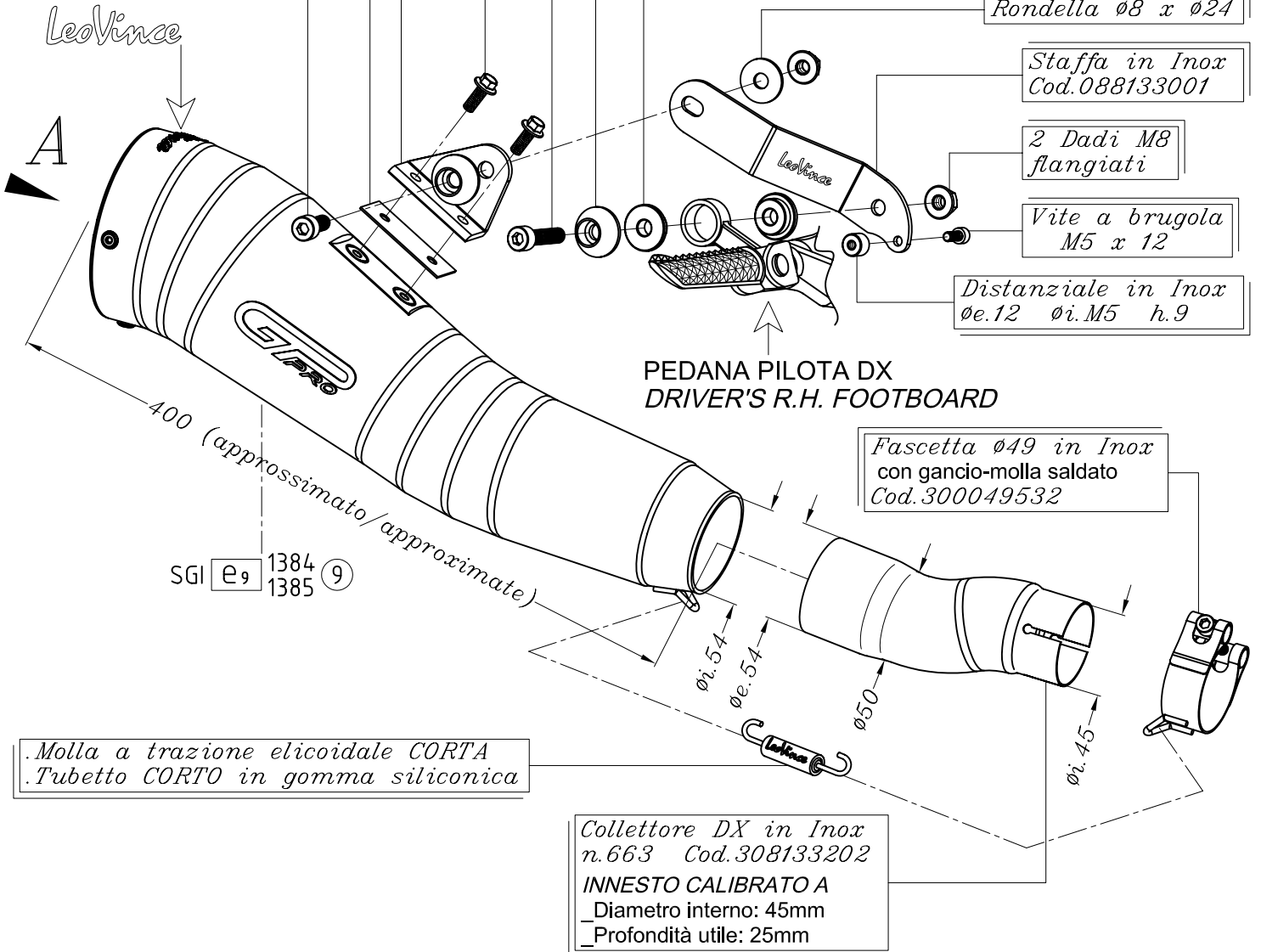
Rondella Ø8 x Ø24

*Staffa in Inox
Cod.088133001*

*2 Dadi M8
flangiate*

*Vite a brugola
M5 x 12*

*Distanziale in Inox
Øe.12 Øi.M5 h.9*



YAMAHA YZF 600 R6 i.e. ('06/'11)

Art.8133 Slip-on SBK GP PRO - Passaggio STANDARD

OMOLOGATO "EVOLUTION II"